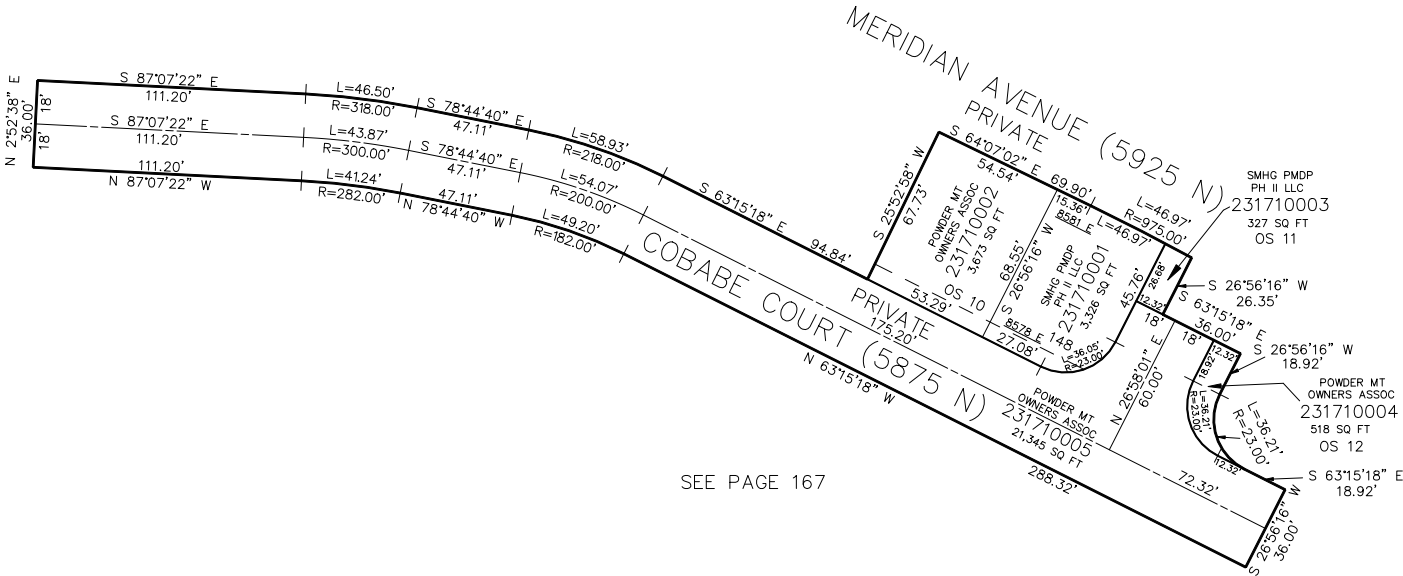


PART OF THE NE.1/4, OF SECTION 8, T.7N., R.2E., S.L.B. & M.  
**OVERLOOK AT POWDER MOUNTAIN PHASE 3 1ST AMENDMENT**

IN WEBER COUNTY  
SCALE 1" = 40'

TAXING UNIT: 491

SEE PAGE 167



SEE PAGE 167

10' UTILITY & DRAINAGE EASEMENTS EACH  
SIDE OF PROPERTY LINES AS INDICATED  
BY DASHED LINES EXCEPT AS OTHERWISE  
SHOWN.

FOR COMPLETE SURVEY DATA SEE  
ORIGINAL DEDICATION PLAT IN  
BOOK 95, PAGE 88 & 89 OF RECORDS.